

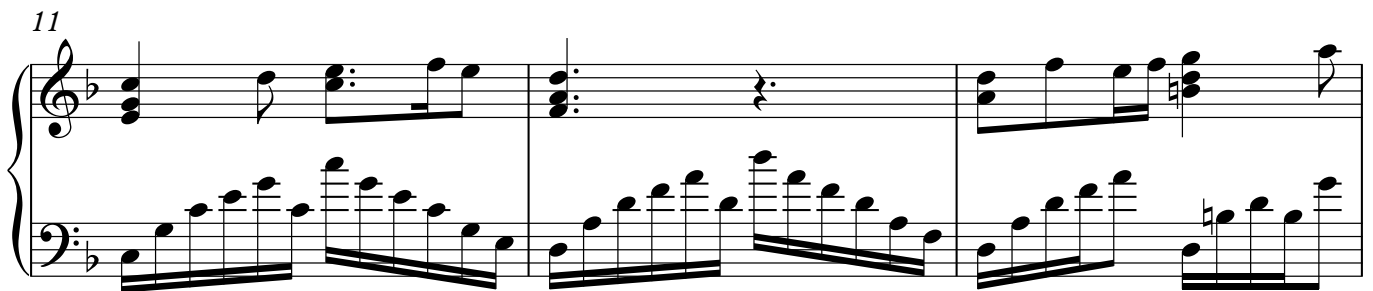
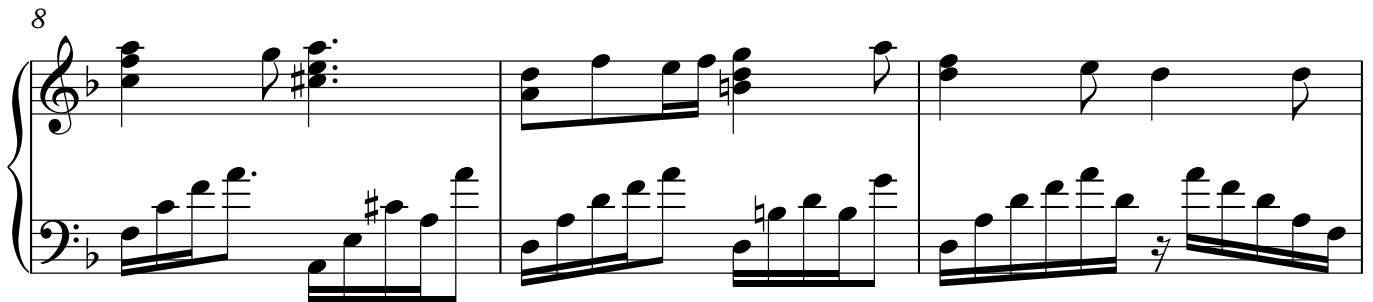
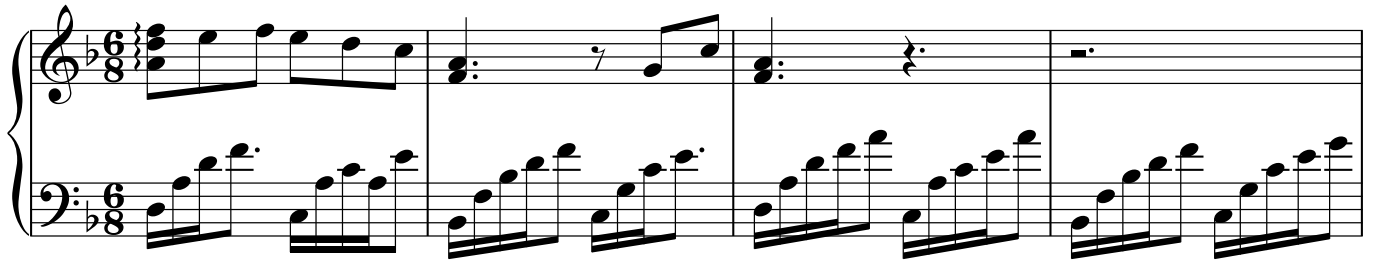
Brothers

Fullmetal Alchemist OST

Arranged by Theishter
Sheets by UnlimitedMusicWorks

Original Composer: Michiru Oshima

♩ = 130



17

System 1 (measures 17-19) of a piano piece. The key signature has one flat (B-flat). The right hand features a melody with eighth and quarter notes, while the left hand plays a continuous eighth-note accompaniment. Measure 19 includes a fermata over the final chord.

20

System 2 (measures 20-22). The right hand has a more complex texture with chords and moving lines. The left hand continues with eighth-note patterns. Measure 22 ends with a fermata.

23

System 3 (measures 23-25). The right hand features prominent chords and some sixteenth-note passages. The left hand maintains the eighth-note accompaniment. Measure 25 concludes with a fermata.

26

System 4 (measures 26-28). The right hand shows a melodic line with some chromaticism, including a sharp sign. The left hand continues the eighth-note accompaniment. Measure 28 ends with a fermata.

29

System 5 (measures 29-31). The right hand has a melodic line with some rests. The left hand continues the eighth-note accompaniment. Measure 31 ends with a fermata.

32

System 6 (measures 32-34). The right hand features a melodic line with some rests. The left hand continues the eighth-note accompaniment. Measure 34 ends with a fermata.

35

Measures 35-38 of a musical score in B-flat major. The right hand features chords and eighth-note patterns, with an 8va marking above measures 36 and 38. The left hand plays a steady eighth-note accompaniment.

39

Measures 39-42 of a musical score in B-flat major. The right hand continues with chords and eighth-note patterns, including an 8va marking above measure 40. The left hand maintains the eighth-note accompaniment.

43

Measures 43-46 of a musical score in B-flat major. The right hand features chords and eighth-note patterns, with an 8va marking above measure 44. The left hand continues the eighth-note accompaniment.

47

Measures 47-51 of a musical score in B-flat major. The right hand features chords and eighth-note patterns. The left hand continues the eighth-note accompaniment.

52

Measures 52-55 of a musical score in B-flat major. The right hand features chords and eighth-note patterns. The left hand continues the eighth-note accompaniment.

56

Measures 56-58 of a piano piece. The key signature has one flat (B-flat). Measure 56 features a treble clef with a whole note chord (F4, A4, C5) and a bass clef with a sixteenth-note ascending scale (F3, G3, A3, B3, C4, D4, E4, F4). Measure 57 continues the bass clef scale. Measure 58 has a treble clef with a whole note chord (F4, A4, C5) and a bass clef with a sixteenth-note descending scale (F4, E4, D4, C4, B3, A3, G3, F3).

59

Measures 59-61. Measure 59: Treble clef has a whole note chord (F4, A4, C5); bass clef has a sixteenth-note ascending scale. Measure 60: Treble clef has a whole note chord (F4, A4, C5); bass clef has a sixteenth-note ascending scale. Measure 61: Treble clef has a whole note chord (F4, A4, C5); bass clef has a sixteenth-note descending scale.

62

Measures 62-64. Measure 62: Treble clef has a whole note chord (F4, A4, C5); bass clef has a sixteenth-note ascending scale. Measure 63: Treble clef has a whole note chord (F4, A4, C5); bass clef has a sixteenth-note ascending scale. Measure 64: Treble clef has a whole note chord (F4, A4, C5); bass clef has a sixteenth-note descending scale.

65

Measures 65-67. Measure 65: Treble clef has a whole note chord (F4, A4, C5); bass clef has a sixteenth-note ascending scale. Measure 66: Treble clef has a whole note chord (F4, A4, C5); bass clef has a sixteenth-note ascending scale. Measure 67: Treble clef has a whole note chord (F4, A4, C5); bass clef has a sixteenth-note descending scale.

68

Measures 68-70. Measure 68: Treble clef has a whole note chord (F4, A4, C5); bass clef has a sixteenth-note ascending scale. Measure 69: Treble clef has a whole note chord (F4, A4, C5); bass clef has a sixteenth-note ascending scale. Measure 70: Treble clef has a whole note chord (F4, A4, C5); bass clef has a sixteenth-note descending scale.

71

Measures 71-73 of a piano piece. The right hand features a melody with eighth and sixteenth notes, often beamed together, and includes some triplets. The left hand plays a steady eighth-note accompaniment. The key signature has one flat (B-flat).

74

Measures 74-76. The right hand continues the melodic line with some rests. The left hand maintains the eighth-note accompaniment. The key signature remains one flat.

77

Measures 77-79. In measure 78, the right hand has a triplet of eighth notes marked with an 8va bracket, indicating an octave transposition. The left hand continues the accompaniment. The key signature remains one flat.

80

Measures 80-82. Similar to measure 78, measure 81 features a triplet of eighth notes in the right hand marked with an 8va bracket. The left hand continues the accompaniment. The key signature remains one flat.

83

Measures 83-85. The right hand melody continues with eighth and sixteenth notes. The left hand accompaniment remains consistent. The key signature remains one flat.

86

Measures 86-88 of a piano piece. The music is in B-flat major (two flats) and 4/4 time. The right hand features a continuous eighth-note melody, while the left hand plays a steady eighth-note accompaniment. The key signature changes to B major (one sharp) at the end of measure 88.

89

Measures 89-91 of the piano piece. The right hand continues with eighth-note patterns, and the left hand maintains the eighth-note accompaniment. A dashed line with the marking "8va" indicates an octave transposition for the right hand starting at measure 90. The key signature remains B major.

92

Measures 92-94 of the piano piece. The right hand plays a more complex melody with some chords and rests. The left hand continues with eighth-note accompaniment. The piece concludes with a final chord in the right hand and a whole note in the left hand.